



Release Notes

TABLE OF CONTENTS

1. Getting Started	1
• System Requirements & Installation	1
• User Guides & Online Help	1
• Technical Support Options.....	2
2. New Features & Enhancements.....	3

SYSTEM REQUIREMENTS & INSTALLATION

For a full list of system requirements and complete installation instructions for PC*MILER|Rail products, please see the PC*MILER|Rail *User Guide*.

User guides can be accessed at <https://support.pcmiler.com> (Internet connection required). If accessing a user guide from the Support pages, you'll need to download the PDF to your hard drive to be able to search for keywords.

See below on how to access user guides and search for keywords once PC*MILER|Rail has been installed.

USER GUIDES & ONLINE HELP

NOTE: You must have Adobe Acrobat Reader on your computer to properly view the PDF user guides for PC*MILER|Rail products. (Using another PDF reader may cause faulty pagination or other problems.) If you do not have this program installed already, a free copy can be downloaded from www.adobe.com.

To make Adobe Reader your default reader, from within the Adobe Reader application select the Edit menu > Preferences > General and click **Select as Default PDF Handler**.

The *PC*MILER|Rail User's Guide* can be accessed from within PC*MILER|Rail by selecting the Help tab > *Help Index*, by pressing the <F1> key while in the main application window, or by clicking a Help button in any dialog.



Additionally, you can click the Windows **Start** button > **All Programs** (or the equivalent on your system) > **PCMILER Rail 24** > *PC*MILER|Rail User's Guide*.

To search for a keyword or phrase in a user guide, use Adobe Reader's **Find** option in the *Edit* menu or on the toolbar.

TECHNICAL SUPPORT: WE'RE HERE TO HELP

ALK Technologies offers comprehensive technical support for users of PC*MILER|Rail and its related products. If you have questions about PC*MILER|Rail or problems with the software, please visit our online Support Center at <https://support.pcmiler.com>. There, you will find a wide range of helpful resources – including user guides, webinars and answers to frequently asked questions. You can also contact us by:

Phone: 1.800.377.6453, ext. 2 or 609.683.0220, ext. 2.

Email: Within our online Support Center, you can contact PC*MILER's technical support team by clicking on the **Submit Ticket** button in the upper, right-hand side of your screen. Fill out and submit your information, and we will contact you.

Hours: 8 a.m. - 5 p.m., Mon-Fri, Eastern Standard Time

NOTE: Please be sure to have your PC*MILER Product Key Code, version number, Windows® version number, and hardware configuration information (manufacturer, speed, and monitor type) available before your call and include that information in your email to ensure we can provide you with the best possible service.

Section 2

New Features & Enhancements

PC*MILER | Rail 24 Includes:

ENHANCED!	Updated rail network
NEW!	PC*MILER Rail-BatchPro includes a new application (batchrailcmd.exe) that can run large volumes of routes directly from the command line. (Applicable license required.)
NEW!	PC*MILER Rail now runs on Windows Server 2016
NEW!	Windows desktop shortcut to the Rail License Tool
ENHANCED!	Simplified layout of the settings in the Map Features dialog
ENHANCED!	PC*MILER Rail's Remote Support Tool can be opened directly from the Help ribbon

NEW FEATURES & ENHANCEMENTS

ENHANCED! Rail Network Data Updates.

The following enhancements were made since Version 23.0:

- Added 10 new railroads, 223 new stations and 50 new junction interchanges.
- Removed 3 railroads, 313 stations and 31 junctions.
- Other minor corrections based on feedback from railroads and users.

New Railroads Added Since Version 23.0:

DCR	DELMARVA CENTRAL RAILROAD COMPANY
RBRM	R BULT RAIL LINES CORP
TPR	TRADEPOINT RAIL LLC
TSR	TEXAS & EASTERN RAILROAD LLC
DRRV	DOVER & ROCKAWAY RIVER RAILROAD
JXPT	JACKSONVILLE PORT TERMINAL RAILROAD LLC
GOOS	GOOSE LAKE RAILWAY LLC
UCT	INDIANA BUSINESS RAILROAD D/B/A UNION CITY TERMINAL RAILROAD

IMR	ITAWAMBA MISSISSIPPIAN RAILROAD LLC
DCC	DECATUR CENTRAL RAILROAD INC

Railroads Expired Since Version 23.0:

BDR	SPARROWS POINT RAIL, LLC D/B/A BALTIMORE INDUSTRIAL RAILROAD
LVRC	LAMOILLE VALLEY RAILROAD COMPANY
NCA	NORTH CAROLINA & ATLANTIC RAILROAD

NEW! Command line application for PC*MILER|Rail-Batchpro.

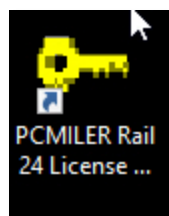
PC*MILER|Rail-BatchPro's new application, **batchrailcmd.exe**, streamlines the process of running BatchPro from your PC's command line – without the overhead of a user interface. This feature is useful for scheduled runs, running a sequence of batch files, or for running BatchPro from another application – for example, executing an overnight batch run from your scheduler. *(Requires an add-on license for PC*MILER|Rail-BatchPro.)*

NEW! PC*MILER|Rail now runs on Windows Server 2016.

Installation on Windows Server 2016 is supported with this release.

NEW! Windows desktop shortcut to the Rail License Tool.

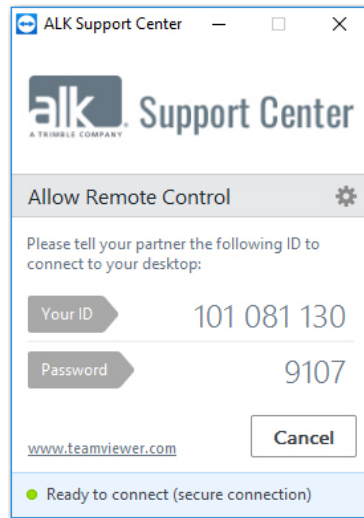
A new desktop shortcut allows you to quickly view your license status in case you need to update it or deactivate it so you can move your PC*MILER|Rail installation to a new computer.



License Tool

ENHANCED! Remote Support Tool is available through the Help ribbon.

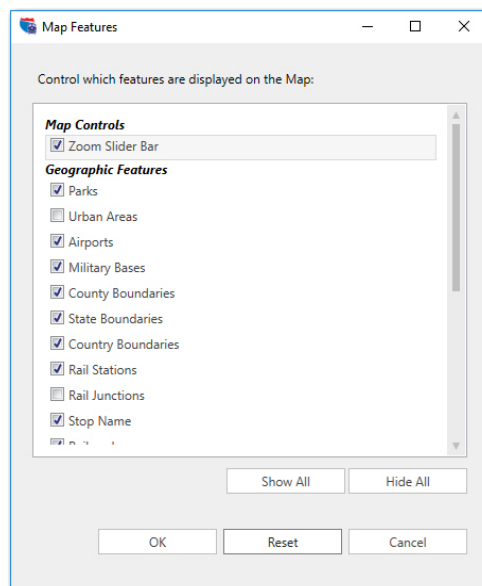
ALK's Remote Support Tool can now be opened directly from the **Help** ribbon at the top of your PC*MILER|Rail window. With your permission, the Remote Support Tool (also called TeamViewer) gives our technical support agents access your computer desktop to solve problems. (Note: You must first contact technical support. An agent will guide you through using this tool.) Internet access required.



Remote Support Tool

ENHANCED! Simplified layout of the settings in the Map Features dialog.

To provide a better user experience with data displayed on the map, the **Map Features** settings have been optimized so they are grouped by functional categories. (NOTE: Some features shown may require additional licenses.)



Map Features Dialog