

Seamlessly integrate miles, costs, drive times, and ETAs into any application.

Quickly process data for customizable rating, reporting, & analysis.



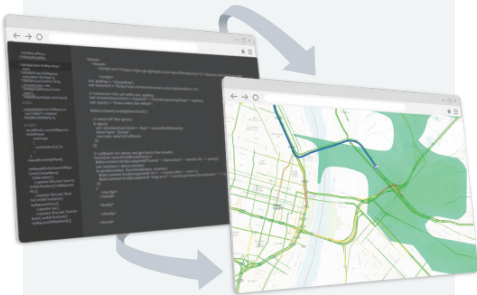
## PC\*MILER Web Services

Generate miles, routes and driving directions in web-based applications using RESTful or SOAP interfaces



A companion solution for PC\*MILER Web Services, display routes, locations, vehicles, traffic, weather, and more on our high quality map visualization platform

Flexible JavaScript Mapping, Routing and Geocoding APIs for easy integration



## PC\*MILER|Connect

Leverage your existing infrastructure by integrating our software locally or in a network server environment



## TCP/IP

Connect PC\*MILER in a Windows environment to an application residing on another platform with PC\*MILER TCP/IP



## Multi Version Switch

Concurrently support and gain access to mileage reports across multiple versions of PC\*MILER installed on the same server



## PC\*MILER|Spreadsheets

Access formulas and data within Microsoft® Excel® for fast mileage and toll cost calculations as well as address conversions to lat/long coordinates



## PC\*MILER|BatchPro

Instantly obtain mileage, cost, and time estimates from large volumes of origin and destination pairs



## PC\*MILER|RouteMatrix™

Generate a "N X N" trip grid with travel times and distances using all possible pairs of points in a set of locations

ADDITIONAL LICENSING APPLIES

Learn more by speaking with one of our dedicated Account Executives: **800-377-6453, ext. 1**



**Global Offices**  
USA, UK, France, Germany, India

[alk.com](http://alk.com)

ALK Technologies is a transportation technology company dedicated to defining the optimal route to success through innovative routing, mileage, mapping, and navigation solutions. © 2017 ALK Technologies Inc. All Rights Reserved