

ADDITIONAL FEATURES & BENEFITS

- **Improve fleet utilization** by determining advantageous rail routings.
- **Ensure fair payment of car hire and state ad valorem taxes** by accurate measurements of mileage.
- **Minimize empty haulage costs** by tracking empty and loaded mileage by rail car, carrier and state.
- **Directional Routing** for accurate one-way routes and mileage.
- **Enhanced Intermodal Routing** to accurately identify intermodal service locations and determine corresponding mileage.
- **Route Duplication** option allows for an existing route to be duplicated without re-entering stops and carrier information.
- **AutoRouter or Single Route Entry Mode** provides customized railroad selection for simplified route entry.
- **Identify Locations using** Station Name and State, Standard Point Location Codes (SPLC), Freight Station Accounting Codes (FSAC), Eastern Railroad President's Conference Codes (3-3-3) or Rule 260 Junction Codes (R260).
- **City and SPLC Labels** to view station locations on the map by either station name or SPLC.
- **Show All Routes Option** in the AutoRouter allows users to display all generated routes on the map simultaneously.

SYSTEM REQUIREMENTS

Environment:

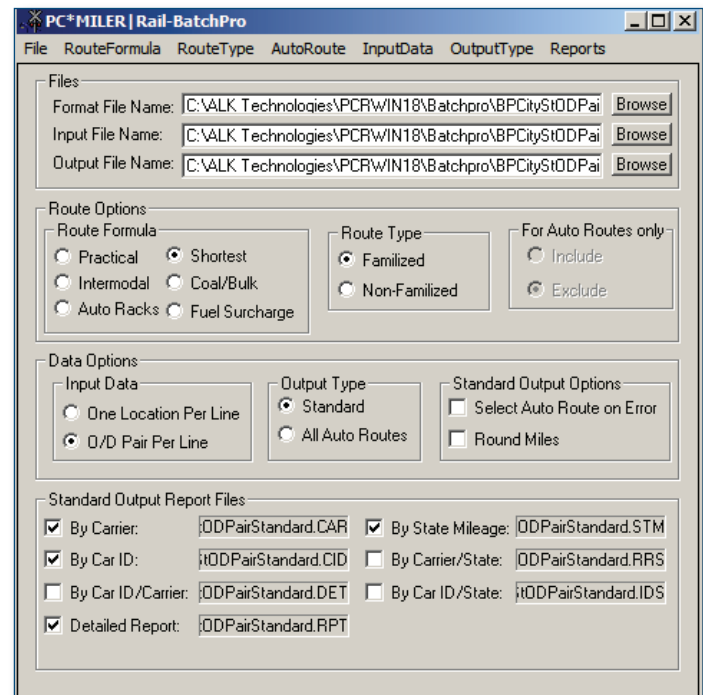
- PC with a minimum of 1.5 - 2 GHz processor
- 60 MB hard disk space
- 512 MB of RAM

Platforms:

- PC/LAN Windows® (2003, Vista, XP, and 7 running in 32-bit compatibility mode), Citrix Metaframe, Windows Servers (Terminal Servers, Server 2003, Server 2008 - including Server 2008 R2 running in 32-bit compatibility mode), and TCP/IP functionality for use with other platforms

Requirements for Connectivity Products:

- PC*MILER | Rail-Connect - 10 MB hard disk space
- PC*MILER | Rail-BatchPro - 5 MB hard disk space
- PC*MILER | Rail TCP/IP - Additional 2 MB hard disk space, and UNIX or other host with TCP/IP capability



PC*MILER | Rail-BatchPro Interface

ADDITIONAL PC*MILER | RAIL SOLUTIONS

PC*MILER | Rail-Connect:

Seamlessly interface PC*MILER | Rail routes, mileage and reports into your production environment. Calculate rail mileage, display maps, run state-by-state mileage breakdowns and generate detailed station reports within other software applications, including Microsoft® Excel®.

PC*MILER | Rail-BatchPro:

Simultaneously process large volumes of Origin-Destination Pairs. Automatically summarize empty, loaded, and total mileage by equipment ID, railroad, or state/province for a large number of rail movements.

PC*MILER | Rail-TCP/IP:

Access trip calculation functions from the PC*MILER | Rail-Connect DLL, running on Windows personal computers, over a TCP/IP network from any other computer platform.



For Pricing Information Contact PC*MILER Sales
Tel: 800.377.6453 ext 1 Email: sales@alk.com Web: www.pcmiler.com

