

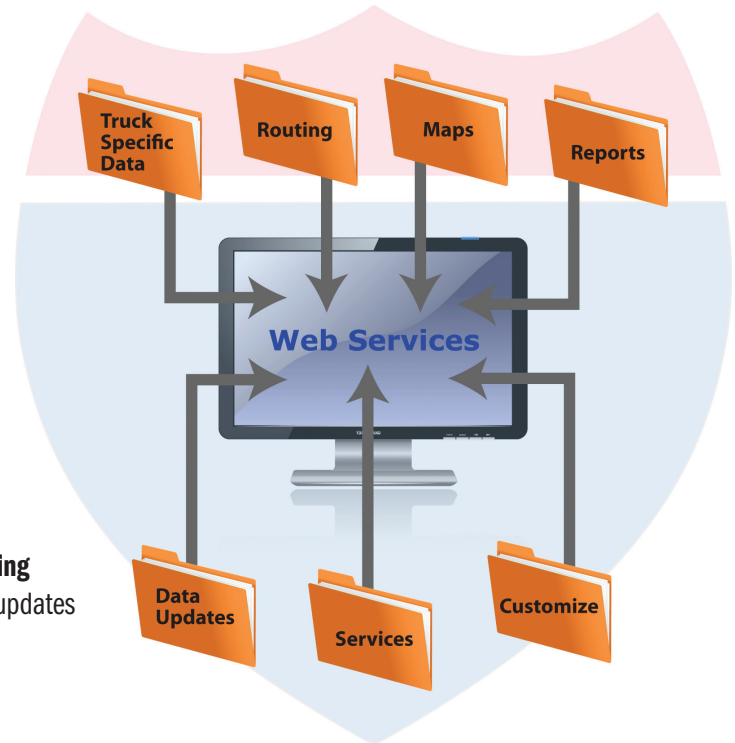


PC*MILER 25

PC*MILER Web Services interfaces PC*MILER with Web Services, .NET and Web-based applications.

PC*MILER Web Services is an integration tool designed to efficiently fulfill all PC*MILER routing, mileage and mapping transactions in a simple hardware and software-agnostic system interface to any computing platform. It offers a standardized way of integrating PC*MILER with Web Services, .NET or Web-based applications using XML (Extensible Markup Language) and SOAP (Simple Object Access Protocol) over an Internet Protocol Backbone – all developed in Microsoft .NET.

- ♥ **Software-as-a-Service (SaaS)**, developed in .NET
- ♥ **Hosted service** accessed through a tier-one data center for stability and reliability
- ♥ **Reduce IT infrastructure investments**, ensure scalability and optimize limited resources
- ♥ **Choose a feature level** to gain access to the features of choice: Standard or Premium
- ♥ **Interact with the PC*MILER database through Application Programming Interfaces (APIs)** where programming requests are optimized through a load balancing router
- ♥ **Transparent access to quarterly and/or annual map, data and routing updates** – includes data in North America and Worldwide (access to updates and data regions depends on feature level)
- ♥ **Calculate an unlimited number of routes and mileage lookups**
- ♥ **Access an online ALK-designed, hosted and maintained Graphical User Interface (GUI)** to reduce the complexity of implementing an interface



New in PC*MILER 25:

- ♥ **NEW!** Visualize real-time and historical traffic* trends directly on the map
- ♥ **NEW!** Calculate more accurate transit times based on industry-leading historical traffic* data
- ♥ **NEW!** Define a departure or arrival date and time for more realistic transit times
- ♥ **NEW!** Generate routes and toll costs* based on the time of day as well for light vehicles and automobiles
- ♥ **NEW!** Geocode and route to Mexican Postal Codes
- ♥ **NEW!** Map tools to create Geofences and to avoid or warn when a route crosses a Geofence*

*Available at Premium feature level.

PC*MILER | Web generates PC*MILER routes, mileage and maps online.

PC*MILER | Web is a Web-based subscription to ALK's industry standard PC*MILER software. It's perfect for owner operators, fleets, brokers, or anyone else who needs instant, accurate mileage for rate calculation or truck-specific driving directions and maps. PC*MILER | Web is accessible on the Web through any Internet-connected computer, in the office, at home, or on the road.

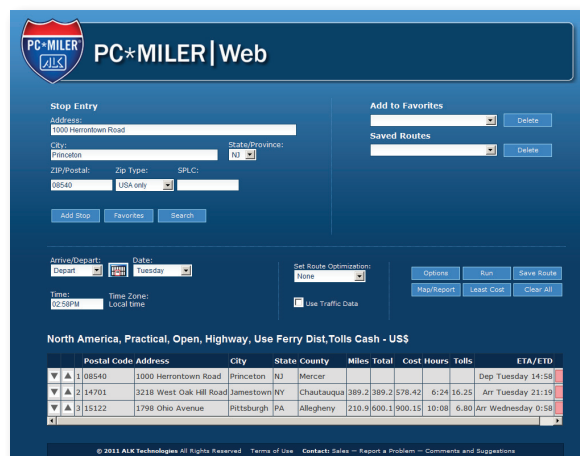
- Powered by the core features and functionality of PC*MILER
- Purchase a monthly, quarterly or annual subscription to Lite, Standard or Premium features
- Generate truck-specific routes, maps and driving directions online without the need to purchase, install or maintain computer software on PCs/laptops

Depending on the feature level purchased, you'll gain access to:

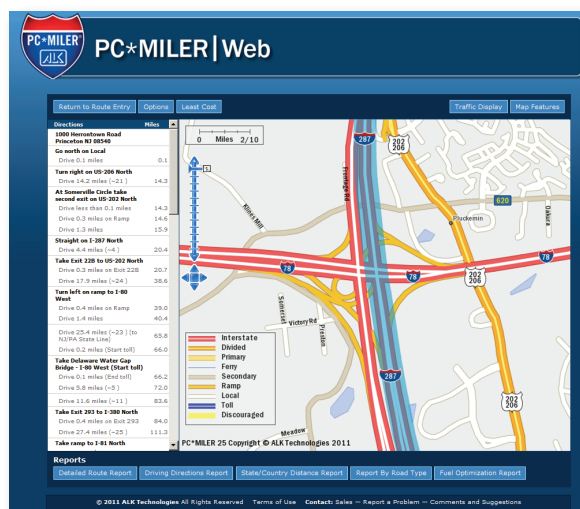
- Instant truck-specific mileage for rate calculation
- 5 different routing options plus combination routing, Least Cost routing and time-based routing features
- Route stop optimization and resequencing
- High quality, customizable maps* - includes visualization of routes and real-time or historical traffic* trends
- Multi-stop routing
- Detailed driving directions and state/country mileage summaries
- Access to quarterly and annually updates that include new routing data, U.S. ZIP Code data, toll cost data*, and map data*

* Depending on feature level.

To see a comprehensive list of features and to sign up for an account go to www.pcmilerweb.com.



PC*MILER | Web's Route Entry Page



PC*MILER | Web's Map/Report Page

SYSTEM REQUIREMENTS

PC*MILER Web Services:

- XML building and parsing tools
- Web Services tool kits
- Account credentials including a Username, Account and Password

PC*MILER Web Services GUI:

Same as PC*MILER | Web's System Requirements

PC*MILER | Web:

- Internet-ready computer
- Account credentials including a Username, Account and Password
- Internet Browsers supported – Microsoft Internet Explorer 7+, Mozilla FireFox 3+ and Google Chrome 3+
- Licensing Options: Trial License, Single-User License or Multi-User License



For More Information Contact PC*MILER Sales
 Tel: 800.377.6453 ext 1 Email: sales@pcmiler.com Web: www.pcmiler.com

