

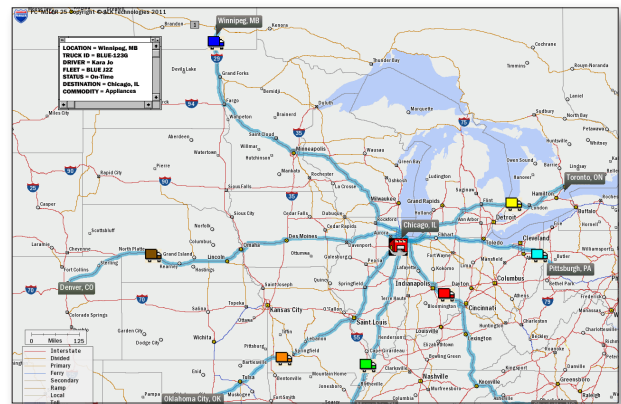


PC*MILER 25

PC*MILER | Mapping interfaces geographic data on maps for integration with third-party systems.

PC*MILER | Mapping seamlessly interfaces PC*MILER routes and geographic data on maps for integration with real-time dispatch and operations analysis programs. PC*MILER | Mapping is Web-enabled, allowing you to include commands in spreadsheets, databases and custom systems to obtain a visual overview of your data.

- On-premise installation
- Visualize geographic relationships in your data as your data changes, such as the location of your pickups and deliveries and where your drivers are, compared to your loads
- Generate multiple PC*MILER maps into GIF images
- Ensure thread-safety for developing multi-threaded applications
- Three interfaces are provided: dynamic DLL linking, use of Mapping COM objects, and Java

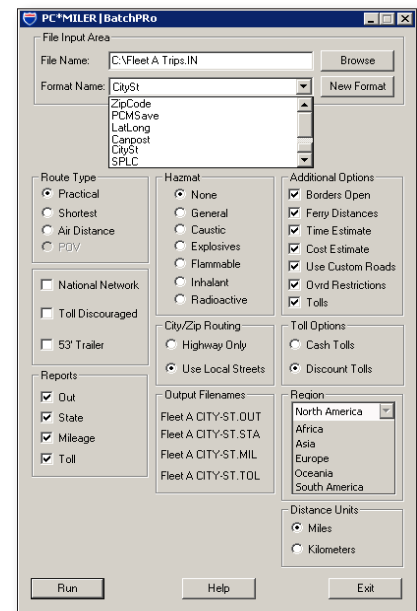


Sample Map Rendering
Plotting a Centralized Warehouse and the Location of Vehicles

PC*MILER | BatchPro simultaneously processes large volumes of origin/destination pairs.

PC*MILER | BatchPro is a batch-processing tool that permits the simultaneous processing of large volumes of lanes set as origin/destination pairs rather than entering routes individually.

- On-premise installation
- Store a large database of origin/destination pairs created using an electronic spreadsheet program, a database management program or a text file editor to then process it automatically through the user interface or through your PC's command line
- Easily populate your mileage database without additional software programming effort



PC*MILER | BatchPro Interface



For More Information Contact PC*MILER Sales
Tel: 800.377.6453 ext 1 Email: sales@pcmiler.com Web: www.pcmiler.com

