

ALK Technologies Business Solutions



Introduction	
ALK Data Quality	1
PC*MILER.....	2
PC*MILER Streets.....	3
PC*MILER Tolls	4
PC*MILER HazMat	5
PC*MILER Fuel Optimization	6
Add-On Data Modules	6
PC*MILER Worldwide	7
ALK FleetSuite	8
PC*MILER Connect	9
PC*MILER TCP/IP	9
Multi-Version Switch	9
PC*MILER Web Services	10
PC*MILER BatchPro	10
PC*MILER Mapping	11
PC*MILER Spreadsheets	12
PC*MILER Intermodal Analysis	12
PC*MILER FuelTax	13
PC*MILER Rail	14
CoPilot®Truck	15
PC*MILER Navigator	16



The Technology That Drives Transportation™

Software plays an important role in maintaining efficient operations of most successful businesses and is especially important for the transportation industry. PC*MILER is the transportation and logistics industry's leading routing, mileage and mapping software and is used by 94% of the Top 100 For-Hire Carriers. From in-vehicle navigation to fleet management, shipment tracking to mileage reporting, ALK Technologies helps companies better manage their shipments, improving the way they do business.

Over the past 23 years, PC*MILER has grown with the industries it serves by listening to our customers and developing new products that will best serve their needs. We are especially excited about our newest platform, PC*MILER Web Services, which delivers all elements of PC*MILER via a simple web interface.

Our customers turn to us for solutions that help them optimize their routes and streamline their business. At ALK, we know it's about more than miles. It's about saving time and money on the road. It's about efficient routing to reduce fuel costs and emissions. It's about keeping drivers safe on truck legal routes and it's about getting shipments where they need to be, on time.

PC*MILER. Quite Simply, the Industry Standard.



About ALK Technologies

The expertise of ALK's team includes computer science, transportation, operations research, digital cartography, and management systems. For over 30 years, ALK Technologies has helped customers navigate the growth and transformation of transportation technology through consulting services, custom information systems and packaged software solutions. Headquartered in Princeton, New Jersey, ALK is a privately held company with a focus on being a market leader in travel and transportation technology. Find out more at www.alk.com.

Our Customers

More than 22,000 motor carriers, shippers, private fleets, and third party logistics companies rely on ALK's PC*MILER commercial routing, mileage, and mapping solutions – including the U.S. Department of Defense (DoD), which has chosen PC*MILER as its exclusive distance and mileage standard that governs the movement of all DoD freight and personnel worldwide.

ALK's Map Database

ALK's experience in mapping provides the most comprehensive coverage for the United States. We were the first company to offer nationwide, seamless, address-to-address routing in 1997; the industry's first commercial dock-to-dock routing solution in 1998; and are continually innovating to improve our products. Since our inception, ALK has continued to lead the market with enhancements to improve the accuracy of its routing database and has incorporated extensive points-of-interest data, exit numbers, and services and facilities information. Our North American products also include street-level data of Canada and highway detail for Mexico and Puerto Rico. Worldwide data coverage includes South America, Europe, Africa, Asia and Oceania.

Data Collection

ALK's map data has been enhanced and refined over the past 30 years through continuous data collection of primary and secondary map data sources. We collect the most important data from our customers – thousands of miles of GPS tracks each month are used to meticulously adjust our road network. Field data is combined with thousands of public and private map data sources including detailed satellite imagery, digital orthoquads, and data from a variety of government sources including the U.S. Postal Service, U.S. Census Bureau, U.S. Geological Survey, and Statistics Canada.



Route 1: State/Country Distance Report

Stop	Leg Miles	Total Miles	Leg Cost/Miles	Total Cost/Miles	Leg Hours	Total Hours	Leg Tolls	Total Tolls
Rutherford, NJ 28 Park Avenue	0.0	0.0	0.00	0.00	0:00	0:00	0.00	0.00
Cleveland, OH 1052 West 9th Street	454.6	454.6	618.23	618.23	7:22	7:22	15.44	15.44
Pittsburgh, PA 902 French Street	135.7	590.2	184.48	802.72	2:30	9:52	22.50	37.94
Harrisburg, PA 1640 Elm Street	204.4	794.6	277.94	1080.66	3:17	13:09	73.00	107.94
Rutherford, NJ 28 Park Avenue	169.4	964.0	230.38	1311.04	2:47	15:56	5.05	112.99
State/Country	Total	Toll	Free	Ferry	Loaded	Empty	Toll(\$)	
NJ	135.5	6.5	126.9	0.0	1:35.5	0.0	5.05	
OH	166.6	53.8	112.7	0.0	1:66.6	0.0	7.60	
PA	362.3	209.4	483.6	0.0	5:42.0	0.0	105.44	
US	664.0	268.8	623.2	0.0	9:44.0	0.0	112.99	
TOTAL	964.0	268.8	695.2	0.0	9:44.0	0.0	112.99	

Route 1: North America, Practical, Open, Highway, Use Ferry Dist, Tolls Discount - US

City or Address: Location Radius:

City: SFLC

Address:

Post Code: City: Address: Miles: Total: Cost/MI: Hours: Tolls:

Stop	Post Code	City	Address	Miles	Total	Cost/MI	Hours	Tolls
Orig	07070	Rutherford, NJ	28 Park Avenue					
Stop 1	44113	Cleveland, OH	1052 West 9th Street	454.6	454.6	618.23	7:22	15.44
Stop 2	15222	Pittsburgh, PA	902 French Street	135.7	590.2	802.71	9:52	22.50
Stop 3	17103	Harrisburg, PA	1640 Elm Street	204.4	794.6	1080.66	13:09	70.00
Dest	07070	Rutherford, NJ	28 Park Avenue	169.4	964.0	1311.03	15:56	5.05

PC*MILER is the routing, mileage and mapping software solution that the transportation and logistics industry depends on. Accuracy and reliability have positioned PC*MILER as the software used by 94% of the top motor carriers. The U.S. Department of Defense (DoD), the General Services Administration (GSA) and the Federal Motor Carrier Safety Administration (FMCSA) also rely on PC*MILER as their worldwide distance standard. If you're seeking to maximize revenues while utilizing the safest, most cost-effective routing for your vehicles, then PC*MILER is the answer.

Benefits:

- North American truck-specific routing, mileage and mapping.
- Generate truck-specific Detailed Driving Directions and State/Country Mileage Summaries.
- Optimize routes by resequencing an unlimited number of stops for efficient route planning.
- Import pickup, delivery or company-specific locations to eliminate manual trip entry.
- Comply with U.S. DoD and GSA distances for approved freight rating and billing.

Features:

- Generate routes based on Practical or Shortest routing parameters or further classify a route with Toll Discouraged, National Network, 53'/102" Trailer or Hazardous Materials routing options.
- 13'6" height, 80,000 lb. weight, 48' and 53'/102" length, and 96" width restrictions. Includes bridge heights and clearances, weight limits and allowances, load limits, one-way designations, left-hand and dangerous turn restrictions, urban road classifications, as well as truck-restricted, truck-designated and truck-prohibited roads.
- U.S. and Canadian street-level routing and address information. (PC*MILER|Streets purchase required.)
- Truck-specific toll costs by weight and axle for cash or discount toll program transactions for U.S. and Canadian lanes. (PC*MILER|Tolls purchase required.)
- Customize the map by avoiding or favoring road segments, entire roads or an entire jurisdiction per your specifications.

Applications:

Truck-specific routes and mileage for rate determination and quotes, trip cost and time estimates, dispatch, driver pay, fuel tax reporting, driver log auditing, load planning, carrier selections, freight bill auditing, logistics analysis, and transportation planning.



Driving directions	Odometer	Time
1052 West 9th Street, Cleveland, OH, 44113	454.6	7:22
Go south on Local		
Drive 0.2 miles	454.8	7:23
Turn left on OH-2 East (Cleveland Memorial Shoreway)		
Drive 1.8 miles (~2 min)	456.6	7:24
Take ramp to I-90 West		
Drive 0.2 miles on Ramp	456.8	7:25



PC*MILER | Streets is street-level routing, mileage and mapping software designed to provide dock-to-dock driving directions over truck-specific routes. It includes all the features and functionality of PC*MILER with an enhanced U.S. and Canadian street-level routing network and street address database. Ensure that your vehicles and loads get to the right place using the most precise route possible, taking into consideration truck-designated, preferred and restricted routes.

Truck-Specific Routing and Map Database:

ALK is a leader in state of the art transportation map data. Our proprietary map data files are updated with the following sources, to name a few:

- 🇺🇸 U.S. Census TIGER files that include new road construction and nationwide address information.
- 🇺🇸 Direct feedback from ALK customers, state auditors, DOT professionals, and various other governmental departments.
- 🇺🇸 Historical truck traffic flows, GPS sightings and aerial photographs allows us to geographically align the routing database to GPS standards.
- 🇺🇸 Various data sources that include 13'6" height, 80,000 lb. weight, 48' and 53'/102" length, and 96" width restrictions.

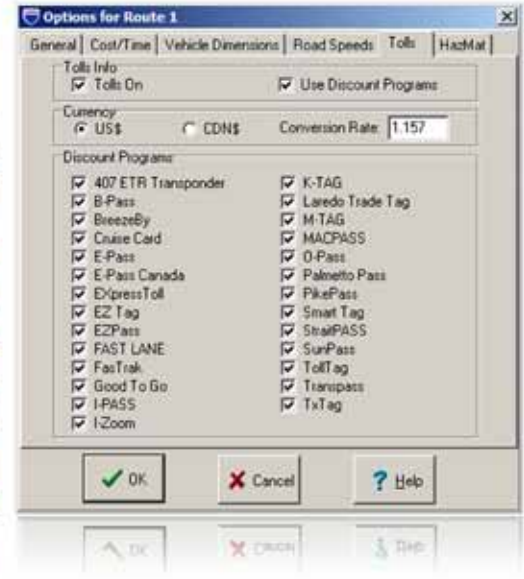
Features:

- 🇺🇸 Nationwide U.S. and Canadian truck-specific street-level data that includes detailed street-level roads and addresses.
- 🇺🇸 Generate routes based on Practical or Shortest routing parameters or further classify a route with Toll Discouraged, National Network, 53'/102" Trailer or Hazardous Materials routing options.
- 🇺🇸 Generate truck-specific driving directions and state/country mileage summaries with road clearance warnings and other truck restrictions included in the turn-by-turn directions.
- 🇺🇸 Light vehicle routing with custom dimensions. Enter dimensions for Height, Length, Width and Weight. (Maximum values are: H 13' 6"; L 53'; W 120" or more; Weight 132,000lbs.)
- 🇺🇸 Truck-specific toll costs by weight and axle for cash or discount toll program transactions for U.S. and Canadian based lanes. (PC*MILER | Tolls purchase required.)

Applications:

Truck-specific, turn-by-turn street-level directions, mileage and maps for dispatch, rate determination and quotes, trip cost and time estimates, dispatch, driver pay, fuel tax reporting, driver log auditing, load planning, carrier selection, freight bill auditing, logistics analysis, and transportation planning.

Route	Type	Origin	Destination	Miles	Cost	Hours	Toll
Toll	Practical, Toll, Open, Tolls Discount	15233 Pittsburgh, PA	52802 Davenport, IA	678.3	922.5	11:54	0.00
Non-Toll	Practical, Open, Tolls Discount	15233 Pittsburgh, PA	52802 Davenport, IA	611.4	831.5	10:41	63.50



PC*MILER | Tolls is driven by the same technology and map data set as ALK's industry-standard PC*MILER routing, mileage and mapping software. When generating routes, truck-specific toll costs are critical. Optimize productivity in multiple departments of your organization by simplifying the rating and reconciliation processes. Determine whether it's more cost-effective to take a toll route, or a non-toll route with additional mileage, before routing a vehicle. Even the smallest toll charge has a big impact on your bottom line!

Benefits:

- Routing: Determine the most cost-effective toll route or non-toll route, factoring in additional mileage over costs.
- Rating: Stay competitive and profitable with precise operating costs and freight bill calculations.
- Reconciliation: Remove the guesswork from rating billing and driver reimbursements.
- Revenue: Know the real costs of your lanes instead of estimating or averaging toll costs (either as flat rates or per mile rates) in your transportation planning and rate negotiations.
- Retention: Improve driver retention and recruiting with exact toll cost reimbursement.
- Quarterly toll data updates provide the latest changes in nationwide U.S. and Canadian toll costs for commercial vehicles.

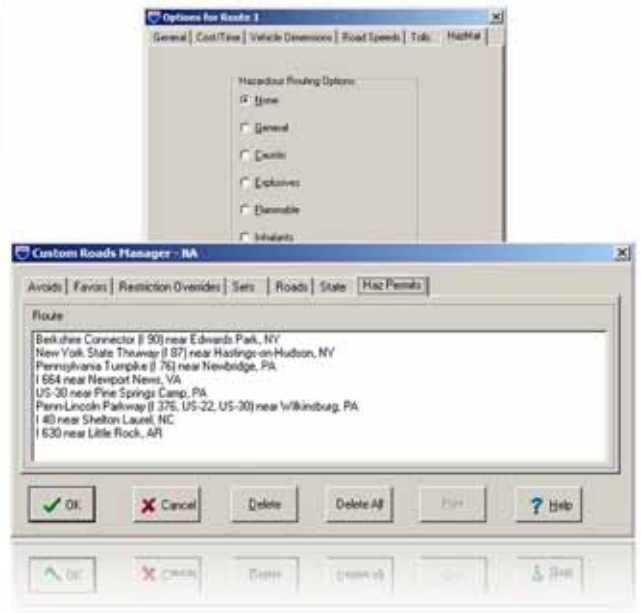
Toll Data:

There are over 68,300 unique toll paths in the database that are monitored and updated as toll rates fluctuate, including:

- Nationwide U.S. toll costs for cash and discount toll program transactions (e.g. E-ZPass, MACPASS).
- Toll costs by weight classification and axle count (up to 132,000 lb. and 14 axles – includes multi-trailer).
- One-way tolling to keep operating costs accurate for each leg of the trip.
- Bridge and tunnel tolls that differ depending on the direction you approach the toll facility.
- International border crossing tolls.
- Newly added, removed and renamed toll plazas and toll roads or bridges.
- Discounted toll program's toll rate increases/decreases or introduction/removal.

Applications:

Truck-specific routes, mileage and toll costs for rate determination and quotes, trip cost and time estimates, dispatch, driver pay, driver log auditing, load planning, freight bill auditing, logistics analysis, and transportation planning.



PC*MILER|HazMat generates point-to-point routes, mileage and driving directions for hauling hazardous materials and dangerous goods in the U.S. and Canada. Government mandates that shippers and carriers implement security plans regarding the transport of hazardous materials. A major step in that process is to provide drivers with routes and mileage that ensure compliance with federal, state and local restrictions and route designations. To ensure fleet and driver safety, PC*MILER|HazMat identifies where drivers should legally be traveling for the particular type of hazardous commodity they are hauling.

Benefits:

- Determine routes and mileage based on over 30 hazmat-specific road classes and routing categories, for example: Alternative, Preferred, Designated, and Prohibited.
- Generate routes based on six hazmat-specific routing types: Corrosive, Explosives, Flammable, General, Inhalants, and Radioactives.
- See a visual representation of hazmat-specific prohibited and designated roadways throughout North America.

- Generate hazmat-specific driving directions that include warnings and/or restriction messages in the turn-by-turn instructions.
- Override hazmat or dangerous goods restrictions in the database to reflect individual permit information.
- Ensure driver compliance with DOT, nationwide hazmat, and nationwide dangerous goods regulations.
- Compare rating mileage and hazmat mileage to create compensating rate factors in support of short-term and long-term rate negotiations.

Applications:

Hazardous materials truck-specific routes and mileage for rate determination and quotes, trip cost and time estimates, dispatch, driver pay, auditing, load planning, carrier selection, freight bill auditing, logistics analysis, and transportation planning.

PC*MILER | Fuel Optimization helps you determine where to purchase the most cost-effective fuel and tell your drivers where to find it. Optimized fuel purchase plans based on daily fuel prices are seamlessly integrated into PC*MILER's routes, reports and driving directions. The optimized fuel plan provides purchasing information within a fleet's fueling networks, indicating where to make fuel purchases and how much fuel to buy at a given location. With fuel prices constantly changing, optimized fuel purchase plans can save 4 to 11 cents per gallon — a conservative average annual savings of \$1,200 per truck per year.

Benefits:

- Generate optimized fuel purchase plans for U.S. and Canadian lanes within designated fueling networks based on daily fuel prices.
- Immediately identify the lowest cost fuel purchases available along a route.

- Generate industry-standard routes with optimized fuel purchase locations integrated into the PC*MILER turn-by-turn directions.
- Generate a Fuel Optimization Report that provides detailed information on total costs, actual cost per gallon, and actual cost per mile including effective costs, savings, route averages, and more.
- Considers established fuel stop discounts in the reported fuel purchase, including retail-minus or cost-plus rates.
- Seamless interface to PC*MILER (with the system requirements of an active web browser and an account on FuelAdvice.com).

Applications:

Truck-specific routes and mileage that include optimized fuel purchase plans for rate determination and quotes, trip cost and time estimates, dispatch, driver pay, fuel tax reporting, driver log auditing, load planning, carrier selections, freight bill auditing, logistics analysis, and transportation planning.

Canadian Postal Codes

Enable six-digit Canadian Postal Codes into the database to search and display corresponding city/province names to enter them as stops along a route.

Standard Point Location Codes

Enable Standard Point Location Codes (SPLC) into the database to generate routes for rating and freight bill auditing. A SPLC is designed to provide each point originating freight and each point receiving freight in North America with a unique code number to identify the point with its geographic location.

*Add-On Data Modules are compatible with select PC*MILER and ALK | FleetSuite products. Contact an ALK Sales Representative for more information.

Add-On Data Modules

infoUSA® Points of Interest

Seamlessly access millions of points of interest from infoUSA's U.S. business database to search, display and route to. Locations are categorized and identified by over twenty categories. Truck-specific points of interest include truck stops, weigh stations, fuel purchase locations, and more.





PC*MILER | Worldwide is point-to-point truck-specific routing, mileage and mapping software that generates routes, distances, maps and driving directions over the entire international highway network. Employ the functionality of PC*MILER across worldwide data coverage, including North America, South America, Europe, Africa, Asia and Oceania. (A Europe-only version with pan-European coverage is also available.)

Benefits:

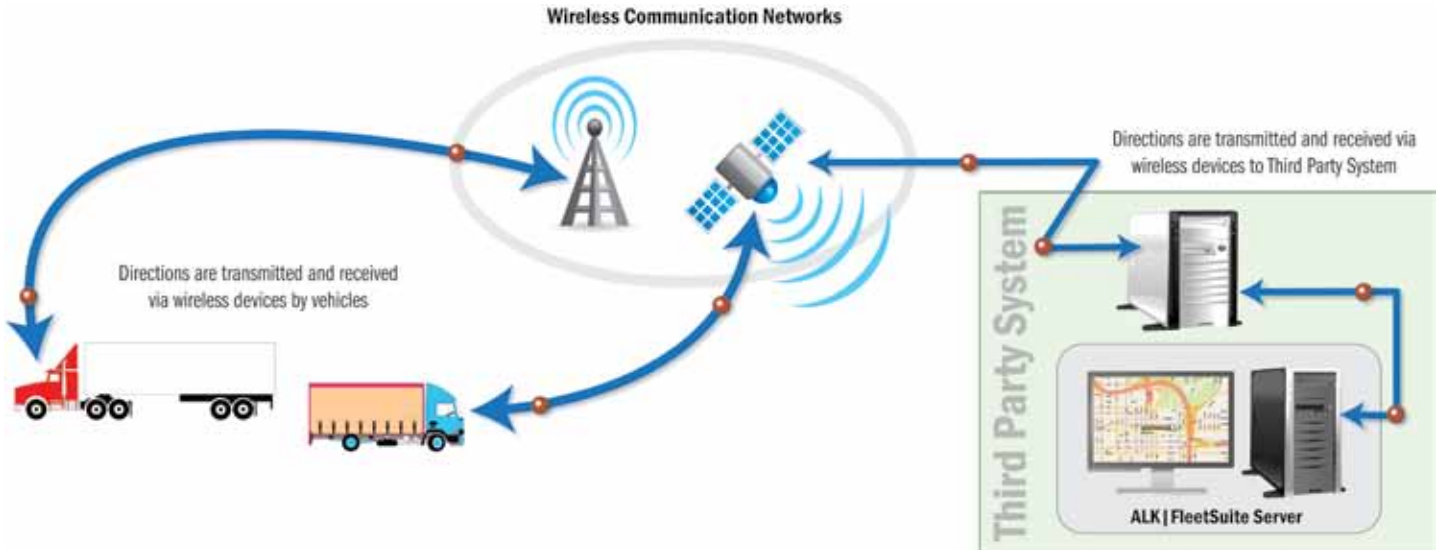
- Generate exact U.S. and worldwide DoD distances for freight and household goods billings.
- Access to worldwide data coverage with borderless routing; allows users to run routes between Europe, Asia and Africa; Central American countries down to the Panama Canal are accessible for routing to and from Mexico, the U.S. and Canada.
- Calculate mileage, trip time and cost estimates for an unlimited number of routes, and generate summaries of states/provinces/countries traveled.
- Access U.S. ZIP Codes, Canadian Postal Codes, European Postal Codes and SPLC. (Applicable Add-On Data Modules purchases required.)

Features:

- Generate truck-specific driving directions and state/country mileage summaries, with road clearance warnings and other truck restrictions included in the turn-by-turn directions.
- Translate reports into English, French, Spanish or Portuguese.
- Optimize routes by resequencing an unlimited number of stops for efficient route planning.
- Search for and geocode locations using FIPS 2-character, ISO 2-character, or ISO 3-character country abbreviations.
- Improve arrival times by specifying border crossing wait-times and road speeds by country to be included in the route's overall drive time calculation.

Applications:

Truck-specific routes and distances for rate determination and quotes, trip cost and time estimates, dispatch, driver pay, driver log auditing, load planning, carrier selection, freight bill auditing, logistics analysis, and transportation planning.



ALK | FleetSuite is a collection of software solutions created specifically to reduce operating costs and improve customer service. By providing information through an installed Microsoft®-based XML Service, ALK | FleetSuite easily integrates with your existing production environments and existing in-cab communications equipment. You have the freedom to purchase only what you need with no costly per vehicle fees.

ALK | FleetSuite Directions:

Transmit dock-to-dock driving directions in real-time over your driver's communication system with varying degrees of detail. Send cross country and/or street-level truck-specific directions using detailed driving directions or in a condensed format containing 90% fewer characters than traditional methods.

Benefits:

- Generate reliable and accurate truck-specific driving directions.
- Reduce the cost of your satellite technology provider's per-character transmission charges.
- Download quarterly map data updates to keep your operations running on the most reliable routes.
- Easy integration into your transportation management system, ERP or custom systems.

ALK | FleetSuite ETA / OoR:

Keep your vehicles on the most efficient routes to save time and money. Request real-time status updates on the precise locations of your vehicles and calculate estimated time of arrivals.

Benefits:

- Receive out-of-route information for vehicles to ensure they're on the most efficient routes.
- Provide your customers with accurate arrival times based on a vehicle's precise location.

ALK | FleetSuite Mapping:

View the exact locations of multiple trucks based on their real-time latitude/longitude coordinates. When a truck is reported as being out of route by a user-specified number of miles, pin-point its location on a map to identify why. If a vehicle is lost or stolen, you'll know exactly where it is.

Benefits:

- Integrate real-time maps into your dispatch operations to create 'what-if' scenarios for complicated distribution problems.
- View the locations of your drivers compared to your loads or your customers in relation to your distribution facilities.
- Track equipment location and status in real-time to monitor and track service performance.

PC*MILER | Connect seamlessly interfaces PC*MILER routes, mileage and reports with third-party or custom applications. Client applications are able to retrieve PC*MILER distances and drive times, state-by-state mileage breakdowns, detailed driving instructions, stop optimization functionality and much more! PC*MILER | Connect is web-enabled, allowing users to fulfill all routing and mileage needs in a thread-safe manner over an Internet, Intranet or Extranet connection.

Benefits:

- Easily integrates PC*MILER into your production environment.
- COM Interface enhances integration with OLE-enabled development environments such as Visual Basic, Visual C++, Delphi, and Active Server Pages.
- Utilize a Java Native Interface (JNI) layer to simplify the integration with Java-based software applications.
- Generate reports in HTML format, giving you the ability to build dynamic websites for use in any browser environment.

PC*MILER | TCP/IP provides an interface running on Windows personal computers over a TCP/IP network from any other computer platform to PC*MILER | Connect.

Benefits:

- Access the full functionality of PC*MILER | Connect including customized routing and DoD-compliant mileage.
- Cross platform communication (e.g. Mainframe to PC) in a thread-safe manner.
- Provides access from a non-Windows system (e.g. UNIX, AS/400, CICS) to PC*MILER | Connect running on a Windows box.

Applications:

Provides a way to interact with PC*MILER | Connect through a TCP/IP connection.

** Interface Modules are compatible with select PC*MILER products. Contact an ALK Sales Representative for more information.*

Multi-Version Switch

Multi-Version Switch (MVS) is an advanced function of PC*MILER | Connect that serves as an integration tool designed to support multiple versions of PC*MILER installed on one server or on several different servers simultaneously. Instead of manually querying data from each individual version, the MVS functions as the main connection point for third-party systems to programmatically gain access to mileage information from the version of choice.

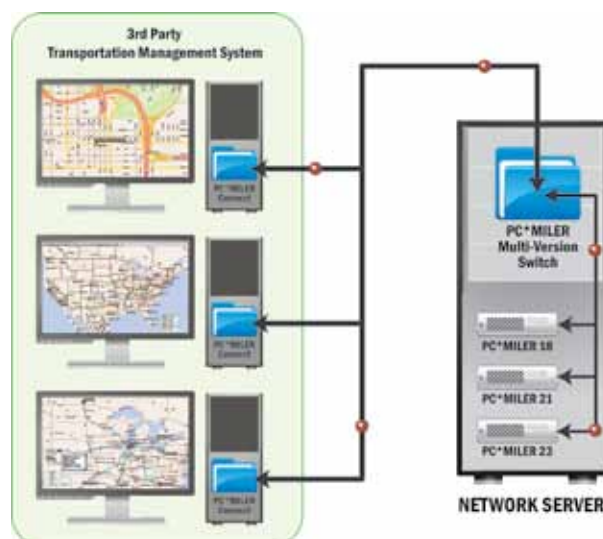
Benefits:

- Reduce the number of dedicated network servers to support along with their maintenance costs and setup fees.
- Cut labor costs by eliminating manual route entry processes.
- Price customer rates accurately based on the negotiated, contracted and requested version of PC*MILER.

Applications:

Integrate the power and functionality of PC*MILER within transportation and logistics management software systems or custom applications.

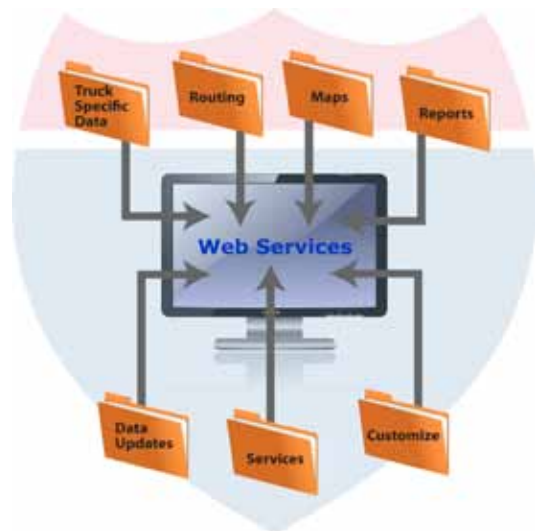
** Compatible with select PC*MILER products and data modules.*



PC*MILER Web Services is a hardware and software agnostic interface to PC*MILER giving users the ability to access the functionality associated with the core product, making it easier to share data and improve efficiency. It offers a standardized way of integrating Web-based applications using XML (Extensible Markup Language) and SOAP (Simple Object Access Protocol) over an Internet Protocol Backbone, all developed in Microsoft .NET.

Technical Benefits:

- ♥ Hosted service accessed through a tier-one data center for stability and reliability.
- ♥ Reduce IT infrastructure investments, ensure scalability and optimize limited resources.
- ♥ Alternative programming interface to our existing COM, Java, or OLE-enabled development environments (Visual Basic, Visual C++, and ASP).
- ♥ Additional mileage solution to ALK's existing PC, UNIX/Linux, AS/400, and Mainframe-based solutions.
- ♥ Seamless integration with Web Services or .NET interfaces or applications.



Product Benefits:

- ♥ Choose a Feature Option Level to gain access to the features of choice: Lite, Standard, or Premium.
- ♥ Establish a standardized system for documenting transportation transactions and their changes.
- ♥ Streamline freight payment/audit procedures by negotiating rates based on actual mileage, not estimated values.
- ♥ Maintain existing interfaces and update hardware at your own pace.

PC*MILER | BatchPro

PC*MILER | BatchPro is a batch-processing tool that permits the simultaneous processing of large volumes of Origin-Destination pairs as an efficient alternative to entering routes individually. Locations can be city/state combinations, street addresses, ZIP or Postal Codes, or latitude/longitude coordinates.

Benefits:

- ♥ Process large volumes of Origin-Destination pairs by creating an ASCII database from an electronic spreadsheet, text file editor or other application.
- ♥ Generate leg and total mileage, cost and time estimates — including toll costs*, and state mileage summaries — for an unlimited number of Origin-Destination records. (*PC*MILER | Tolls purchase required.)
- ♥ Geocode locations quickly and confidently.





PC*MILER | Mapping seamlessly interfaces PC*MILER routes and geographic data on maps for integration with real-time dispatch and operations analysis programs. PC*MILER | Mapping is web-enabled, allowing users to include commands in spreadsheets, databases or custom applications to obtain a visual overview of their data.

Benefits:

- This thread-safe Internet, Intranet and Extranet module allows users to easily generate multiple maps in a GIF image to build dynamic websites for use in any browser environment.
- Utilize a Java Native Interface (JNI) layer to simplify the integration with Java-based software applications.
- COM Interface enhances integration with OLE-enabled development environments such as Visual Basic, Visual C++, Delphi, and Active Server Pages (ASP).

Features:

- Visualize geographical relationships in your data as your data changes, such as the location of pickups and deliveries and where your drivers are compared to your loads.
- Integrate real-time maps into your dispatch operation.
- Create 'what-if' scenarios for complicated distribution problems.
- Track equipment location and status in real-time to monitor and track service performance.
- Plan loads more efficiently to yield more loads per day.

Applications:

Visual real-time dispatch and operations analysis.

- * Interface Modules are compatible with select PC*MILER products. Contact an ALK Sales Representative for more information.

PC*MILER | Spreadsheets generates point-to-point or street-level mileage and drive times within a spreadsheet program with access to built-in functions to summarize and analyze your data. It provides a seamless interface with PC*MILER and Microsoft® Excel®, allowing users to perform customized analysis in an environment specifically designed for data analysis.

Benefits:

- 📌 Negotiate rates based on actual mileage, not approximate values.
- 📌 Analyze transportation costs to and from customers, including exact toll costs per each leg of the trip. (PC*MILER | Tolls purchase required to calculate toll costs.)
- 📌 Calculate driver pay based on per-mile wages.
- 📌 Audit freight bills for mileage discrepancies to verify if you're being paid according to the distance traveled.
- 📌 Select loads based on location and profitability – proximity analysis.
- 📌 Maximizes strategic planning and forecasting methods to provide price quotes in seconds.

FREIGHT RATE ANALYSIS				
ORIGIN		FULL NAME		
Leesburg, VA		20177 Leesburg, VA, Loudoun		
MILEAGE				
DELIVERY LOCATION	ZIP CODE	PRACTICAL MILEAGE	SHORTEST MILEAGE	MILEAGE DIFFERENCE
Jersey City, NJ	07303	254.2	250.9	3.3
Newark, NJ	07102	251.0	245.8	5.2
Fort Lee, NJ	07024	266.2	261.4	4.8
RATE @ \$1.36 Per Mile				
DELIVERY LOCATION	ZIP CODE	PRACTICAL RATE	SHORTEST RATE	RATE DIFFERENCE
Jersey City, NJ	07303	\$345.71	\$341.22	\$4.49
Newark, NJ	07102	\$319.31	\$331.35	\$21.04
LOCATION	CODE	RYLE	RYLE	DIFFERENCE

- 📌 Optimize lane analysis and perform modal comparisons (see Intermodal Analysis below).
- * *Interface Modules are compatible with select PC*MILER products. Contact an ALK Sales Representative for more information.*

PC*MILER Intermodal Analysis

PC*MILER Intermodal Analysis is an easy-to-use spreadsheet application that calculates alternative rail intermodal routes for truck shipments between an origin and a destination. It provides quick comparisons of truck versus intermodal mileage, fuel consumption and carbon emissions.

Features and Benefits:

- 📌 Generate and compare highway mileage and rail mileage in one application. (Applicable licenses required.)
- 📌 Locate intermodal ramps along with servicing railroads to determine the efficiency of your intermodal lanes to enhance your transportation planning.
- 📌 Compare estimated fuel usage and green house gas emissions for truck-only and intermodal routes.
- 📌 Take advantage of pre-set templates that can be easily customized using PC*MILER | Spreadsheets functions.

Leg #	Section	Start Date	Odometer	Non-toll	Toll	Total	Cumulative	Loaded	Taxable	Major Highways	Permit #	Permit 1	Period
1	RS	09/06/09	591,792.5	116.2	11.8	128.0	128.0	Yes	Yes	RS-102, RS-104			
2	BB	09/06/09	592,111.0	318.5		318.5	446.5	Yes	Yes	BB-2			
3	QC	09/06/09	592,483.2	372.2		372.2	818.7	Yes	Yes	QC-185, QC-2000025698		\$350.00	
4	OH	09/06/09	592,996.6	513.4		513.4	1,332.1	Yes	Yes	OH-401			
5	MI	09/06/09	593,212.0	215.2	0.2	215.4	1,547.5	Yes	Yes	I-94			
6	OH	09/06/09	593,257.5	45.5		45.5	1,593.0	Yes	Yes	I-94			
7	IL	09/06/09	593,420.5	157.8	5.2	163.0	1,756.0	Yes	Yes	I-94, I-80			
8	IA	09/06/09	593,725.8	305.3		305.3	2,061.3	Yes	Yes	I-80			
9	NE	09/06/09	594,079.9	354.1		354.1	2,415.4	Yes	Yes	I-80, I-76			
10	CO	09/06/09	594,332.7	452.8		452.8	2,868.2	Yes	Yes	I-76, I-70			
11	UT	09/06/09	594,897.4	364.7		364.7	3,232.9	Yes	Yes	I-70, I-15			
12	AZ	09/06/09	594,926.7	29.3		29.3	3,262.2	Yes	Yes	I-15			
13	NV	09/06/09	595,030.4	123.7		123.7	3,385.9	Yes	Yes	I-15			
14	CA	09/06/09	595,337.1	306.7		306.7	3,692.6	Yes	Yes	I-15, I-8, I-805	00025698	\$350.00	
15	NJ	09/06/09	595,793.6	378.4	58.1	436.5	4,129.1	Yes	Yes	BS-1			
16	BS	09/06/09	596,269.4	475.8		475.8	4,604.9	Yes	Yes	BS-1			
17													

Truck	Toll Miles	Non-toll Miles	Taxable Miles	Loaded Miles	Total Miles	Taxable Gallons	Total Gallons
Jurisdiction: AB							
Diesel1	11,444.3	12,110.9	23,555.2	23,555.2	23,555.2	1,659.000	1,659.000
NaturalGas1	9,688.7	10,333.1	20,221.8	20,221.8	20,221.8	2,071.000	2,071.000
Total for AB	21,333.0	22,444.0	43,777.0	43,777.0	43,777.0	3,730.000	3,730.000
Jurisdiction: AK							
Diesel1	17,444.3	18,110.9	35,555.2	35,555.2	35,555.2	1,672.200	1,672.200
NaturalGas1	13,688.7	14,333.1	28,221.8	28,221.8	28,221.8	2,079.800	2,079.800
Total for AK	31,333.0	32,444.0	63,777.0	63,777.0	63,777.0	3,752.000	3,752.000

Report only one fuel type: Diesel Gasoline Ethanol/Gasohol Propane (LPG)

Delaware Motor Fuel Tax Administration
IFTA Quarterly Fuel Tax Schedule
 Attach this schedule to form IFTA-100
 IFTA Quarterly Fuel Use Tax Report

Licensee IFTA identification number: **DE 0000000000000000** Name: **ALM Technologies, Inc.**

State Jurisdiction (IFTA 101.1) (see Note 1, Item 2, and 3 for other reasons): **DE**

(A) Total IFTA Miles = **213,330** (B) Total Non-IFTA Miles = **22,444** (C) Total Miles = **235,774** (D) Total Gallons = **3,730** (E) Total Gallons (IFTA & Non-IFTA jurisdictions) = **3,730**

IFTA Jurisdiction	Rate	Total IFTA Miles	Taxable Miles	Non-Taxable Gallons	Taxable Gallons	IFTA Fuel Tax	Non-IFTA Fuel Tax	Total Fuel Tax	IFTA Credits Due	Non-IFTA Credits Due	Total Credits Due
DE	0.01	213,330	213,330	148.81	148.81	1,488.10	0.00	1,488.10	0.00	0.00	1,488.10

PC*MILER|FuelTax fully automates fuel and mileage tax tracking, calculation and reporting. The software includes easy-to-use tax forms and rates for all jurisdictions and generates post-operations analysis reports that identify fuel purchase and trip conflicts in self-audits. PC*MILER|FuelTax can be used as a stand-alone product or integrated with PC*MILER to automatically generate distances within the trip sheet.

Benefits:

- Comply with each jurisdiction's regulations regarding tax rates, tax forms and other compliance issues.
- Maintain accurate logs of fuel purchases and trips.
- Download quarterly updates with new tax rates and IFTA Tax Forms per jurisdiction.
- Record historical and current fleet, trailer and driver information.
- Generate routes based on your drivers' odometer mileage or generate PC*MILER mileage.
- Store fuel and mileage tax information to assist in an audit by archiving data.

Features:

- Calculate fuel tax, refunds, and credits.
- Track routes, calculates distance, and record fuel purchases for every trip made by every truck in a fleet.
- Import and export equipment information, trip data, and fuel purchases to eliminate manual data entry procedures.
- Generate Operations Reports such as the Detailed Trip Jurisdiction Report, Jurisdiction Summary by Truck, and Unit History Report. (Other reports are available.)
- Generate Tax Calculation Data Reports such as Bulk Fuel Report, IRP Mileage Percent Report, and Owner/Operator Tax Credit Report. (Other reports are available.)

Applications:

Fuel and mileage tax calculation and reporting, and ability to conduct fleet/driver performance analysis.



PC*MILER | Rail is the rail and logistics industry’s leading routing, mileage and mapping software solution. Widely used in fuel surcharge calculation, equipment management, rail car mileage auditing, carrier selection, rate determination and negotiation, and ad valorem tax reporting, PC*MILER | Rail determines actual operating or fuel surcharge routes and mileage to and from any active rail freight station in the U.S., Canada and Mexico. Through ALK’s close working relationships with all major railroads, PC*MILER | Rail features the most accurate digital representation of the North American rail network.

PC*MILER | Rail-Connect: Seamlessly interface PC*MILER | Rail routes, mileage and reports into production environments. Calculate rail mileage, display maps, run state-by-state mileage breakdowns and generate detailed station reports within other software applications, including Microsoft Excel.

PC*MILER | Rail-BatchPro: Simultaneously process large volumes of Origin-Destination Pairs. Automatically summarize empty, loaded, and total mileage by equipment ID, railroad, or state/province for a large number of rail movements.

Features:

- Over 240,000 miles of rail line, 715 railroads, 49,400 stations and 3,500 unique junction interchanges.
- Identify locations using Station Name, Standard Point Location Code (SPLC), Freight Station Accounting Code (FSAC), Eastern Railroad President’s Conference Code (3-3-3), or Rule 260 Junction Code (R260).

- Generate routes based on Practical, Shortest, Fuel Surcharge, Intermodal, Coal/Bulk or Auto Racks routing parameters.
- Use Single Route Entry mode to obtain accurate mileage on a specific rail route, or use AutoRouter to view and compare multiple routes on alternative railroads.
- Use Junction Helper from Single Route Entry mode to select junction interchanges between carriers or allow PC*MILER | Rail to choose them in AutoRouter.
- Run routes to rail-intermodal freight stations serviced by truck and/or ferry.
- View Detailed Route Reports listing railroad mileage in addition to via points and major cities, with leg and cumulative mileage.
- Display track ownership with color-coded lines and labels to indicate ownership for single and jointly owned rail lines.

Benefits:

- Ensure fair payment of car hire, fuel surcharge, and state ad valorem taxes by accurate measurements of mileage.
- Minimize empty haulage costs by tracking empty and loaded mileage by rail car, carrier and state.
- Integrate with PC*MILER products for seamless surface transportation planning needs with rail and truck mileage and route calculations.



CoPilot Truck is the industry's first GPS navigation system for onboard computers, Windows Mobile Devices, laptops and Tablet PCs. In-cab spoken dock-to-dock directions are based on PC*MILER, the industry standard for routing, mileage and mapping. CoPilot Truck includes detailed North American street-level maps, trip planning, automatic route recalculation, route optimization, and comprehensive hazmat routing. CoPilot Truck technology is also available in a Software Development Kit (SDK) for custom integration with enterprise applications.

CoPilot Truck, available for Windows® Mobile, CE and Embedded Standard (XPe) devices, provides voice guided turn-by-turn driving directions respecting commercial truck restrictions. There's no need for drivers to look at a map, they just listen and go!

CoPilot Truck Features:

- Spoken dock-to-dock directions
- Automatic route recalculation
- Detour around traffic and avoid roads
- Optimize up to 50 stops and pre-plan trips before driving

- Finger touch menus
- Easy to see display screen

CoPilot Truck Includes:

- Over 6.4 million miles of North American roadway
- 13'6" height, 48' length, 80,000 lb. weight and 96' width restrictions
- Hazardous Materials and 53'/102" Trailer restrictions
- Nationwide U.S. and Canadian truck-specific street-level maps
- 7 million of Points of Interest (POIs) including phone numbers
- POIs for the professional driver include: truck stops, weigh stations, rest areas, and CAT Weigh Scales
- Over 38,400 exit numbers
- Over 2.89 million commercial truck restrictions (e.g. bridge heights and clearances, load limits, weight limits and allowances, one-way road designations, left-hand and dangerous turn restrictions, urban road classifications, as well as truck-restricted, truck-designated and truck-prohibited roads)



PC*MILER Navigator powered by CoPilot, is changing the way commercial truck drivers work, making it possible for spoken street-level directions to be generated anywhere within seconds. It's the first GPS navigation system specifically designed for company drivers, owner operators, and leased operators and the only way to get industry-standard PC*MILER directions in the cab. PC*MILER is used by more than 22,000 motor carriers, shippers and logistics companies around the world.

Navigation Features:

- ▀ **PC*MILER Routing:** Practical, Shortest, 53'/102" Trailer, HazMat, National Network and Toll Avoidance
- ▀ 13'6" height, 48' length, 80,000 lb. weight and 96" width restrictions
- ▀ Truck-specific, loud spoken Dock-to-Dock directions throughout the U.S. and Canada
- ▀ Easily detours around unexpected congestion, avoids specific roads and optimizes up to 50 stops
- ▀ Miss a turn? With fast automatic route recalculation, drivers will never be lost.
- ▀ Over 7 million Points of Interest including truck services, truck stops, weigh stations, rest areas, and CAT weigh scales.

Driver and Fleet Benefits:

- ▀ Reduces out-of-route, empty and deadhead mileage
- ▀ Reduces fuel costs
- ▀ Improves driver efficiency and dispatcher productivity
- ▀ Helps avoid costly fines and vehicle damage
- ▀ Provides accurate pick-up and delivery times
- ▀ Safe and stress-free driving on truck-legal roads
- ▀ Improves operational consistency with PC*MILER in the cab and back office

Truck-Specific Map Data:

- ▀ Over 6.4 million miles of North American roadway
- ▀ Nationwide U.S. and Canadian truck-specific street-level maps
- ▀ Over 2.89 million commercial truck restrictions (e.g. bridge heights and clearances, load limits, weight limits and allowances, one-way road designations, left-hand and dangerous turn restrictions, urban road classifications, as well as truck-restricted, truck-designated and truck-prohibited roads)



1000 Herrontown Rd. Princeton, NJ 08540

Tel: 609.683.0220 Fax: 609-683.0290 www.alk.com GPS: 40.387900N, 74.655675W